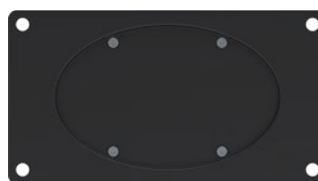


Suits most
TV screens from
10" to 26"



Suitable for screens with
200x100mm mounting holes
using included adaptor plate

Screens
10-26"
26-66cm

Up to
200x100mm
VESA

Weight
Capacity
15kg

BLACK



VLC-202

ADJUSTABLE LED/LCD TV WALL MOUNT

- Tilting wall mount for LCD TV screens
- Adjustable reach
- Dual pivot arm

See over page for detailed product information

CANOHM

VLC-202

Adjustable LED/LCD TV Wall Mount

Features

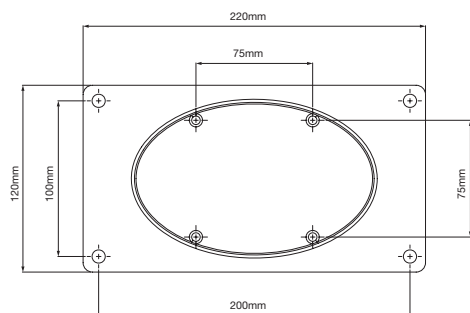
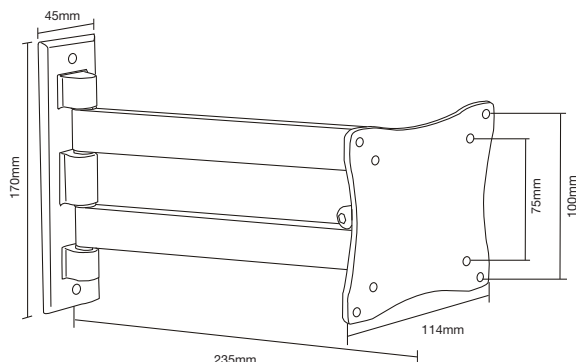
Enjoy the many benefits of mounting your flat panel screen on the wall. Ideal for both private homes and commercial premises alike. Easy to install, the VLC-202 comes fully assembled. Complete with an elegant combination of twin arms and tilt and swivel adjustments, the VLC-202 allows the screen to be viewed at the optimum angle from any position.

Strong and Attractive. Easily attaches to most 10" to 26" (26 to 66cm) LED / LCD screens weighing up to 15kgs using the supplied hardware kit and without the need for special tools. Solid die cast aluminium construction is powder coated in an attractive black finish. The unobtrusive design fits easily into any environment.

Quality. The VLC-202 Wall Bracket is made from quality materials and is covered by a ten year warranty.

Package includes

Wall mount plate assembled with adjustable reach
100 x 100mm tilting screen plate, 200 x 100mm adaptor plate, quality mounting hardware and installation instructions.



Specifications

Colour	Black
Weight Capacity	15kg
Screen sizes	26cm (10") to 66cm (26")
Mounting screw hole pattern	VESA: 75x75, 100x100 and 200x100mm* compliant. * Using included adaptor plate.
Distance of TV from Wall	41mm – 235mm
Retracted offset	193mm
Horizontal Swivel	180° (90° both left and right)*
Tilt Range	±45°*

* Degree of swivel and tilt may be affected by the size of your TV.

Includes: 200 x 100mm 'VESA' adaptor plate included to allow fitment of screens using this mounting hole pattern. Included hardware allows easy fitment of this plate to the main TV mount.

Notes:

1. Do not use this adaptor plate if your TV screen mounting holes conform to those on the main bracket. i.e. 100 x 100mm or less.
2. If your TV, regardless of its screen size, weighs less than the weight capacity stated here, and the location of its mounting screw holes correspond with those listed, then this mount is suitable for your TV.

Screens
10-26"
26-66cm

Up to
200x100mm
VESA

Weight
Capacity
15kg

BLACK

