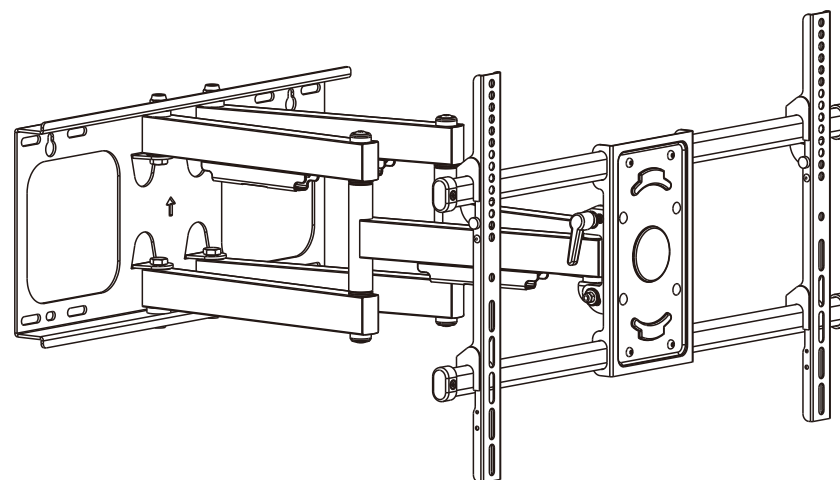


EZYmount

Installation Instructions

Full Motion LED, LCD TV Wall Mount



EZYmount

CANOHM

4/30 Prohasky Street
Port Melbourne, Victoria
3207 Australia

Telephone 03 9644 7888
Facsimile 03 9646 7366
Email sales@canohm.com.au
www.canohm.com.au

Please dispose of this packaging
in a responsible manner – recycle
cardboard/plastic wherever possible.



CAUTION: DO NOT EXCEED
RATED LISTED WEIGHT. SERIOUS
INJURY OR PROPERTY DAMAGE
MAY OCCUR!

VLM-5400



200x200/300x300
400x200/400x400
600x400

80"
MAX



65kg

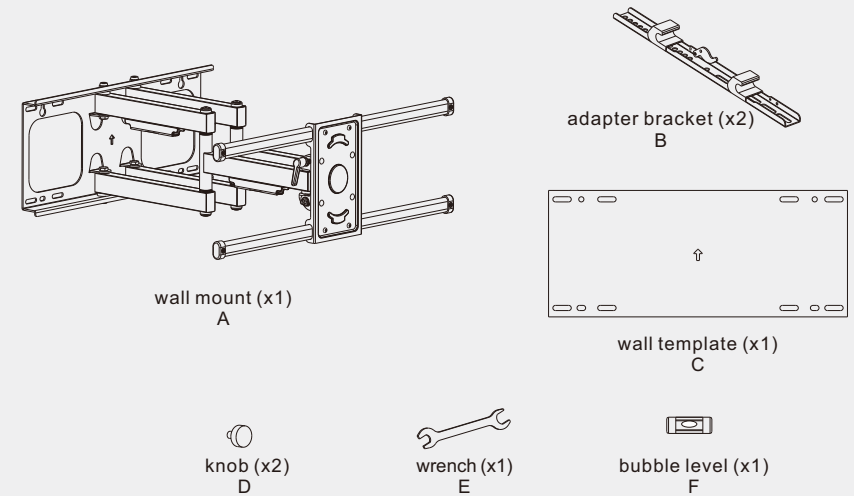
NOTE: Read the entire instruction manual before you start installation and assembly.

⚠ WARNING

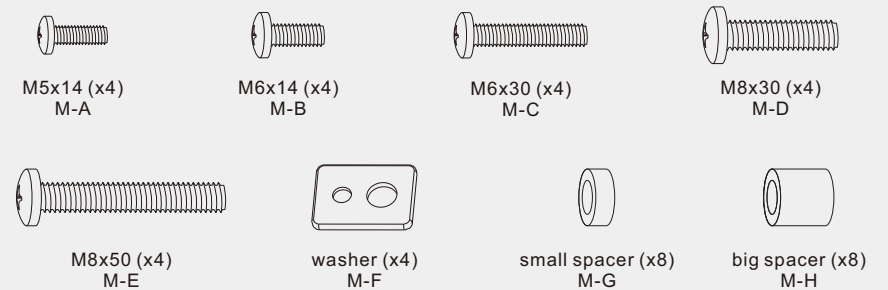
- Do not begin the installation until you have read and understood all the instructions and warnings contained in this installation sheet. If you have any questions regarding any of the instructions or warnings, please contact your local distributor.
- This mounting bracket was designed to be installed and utilised **ONLY** as specified in this manual. Improper installation of this product may cause damage or serious injury.
- This product should only be installed by someone with good mechanical ability who has basic building experience and fully understands this manual.
- Make sure that the supporting surface will safely support the combined weight of the equipment and all attached hardware and components.
- If mounting to wood wall studs, make sure that mounting screws are anchored into the centre of the studs. The use of a stud finder is highly recommended.
- Always use an assistant or mechanical lifting equipment to safely lift and position the equipment.
- Tighten screws firmly, but do not over tighten. Over tightening can cause damage to the items, This greatly reduces their holding power.
- This product is intended for indoor use only. Using this product outdoors could lead to product failure and personal injury.

Component Checklist

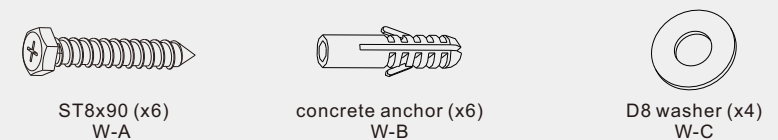
IMPORTANT: Ensure that you have received all parts according to the component checklist prior to installation. If any parts are missing or faulty, telephone your local distributor for a replacement.



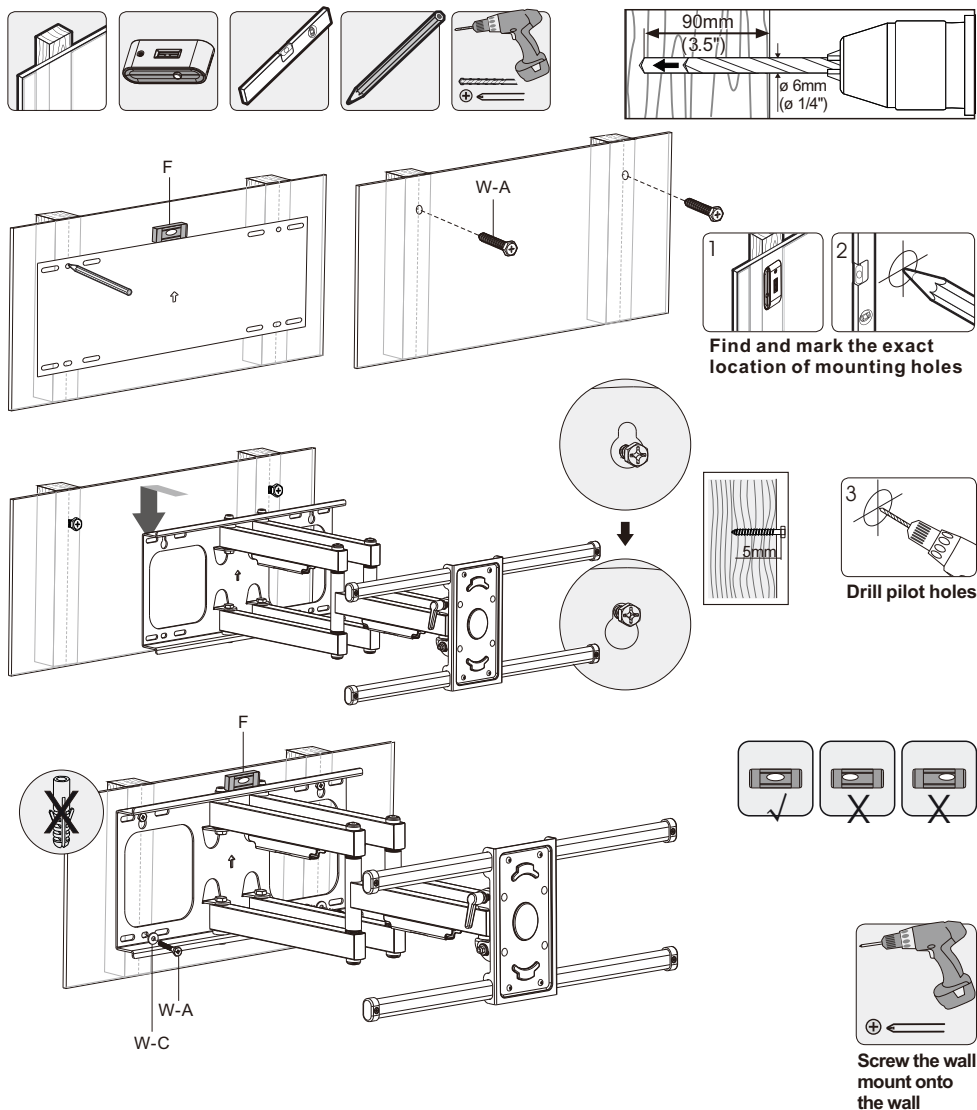
Package M



Package W



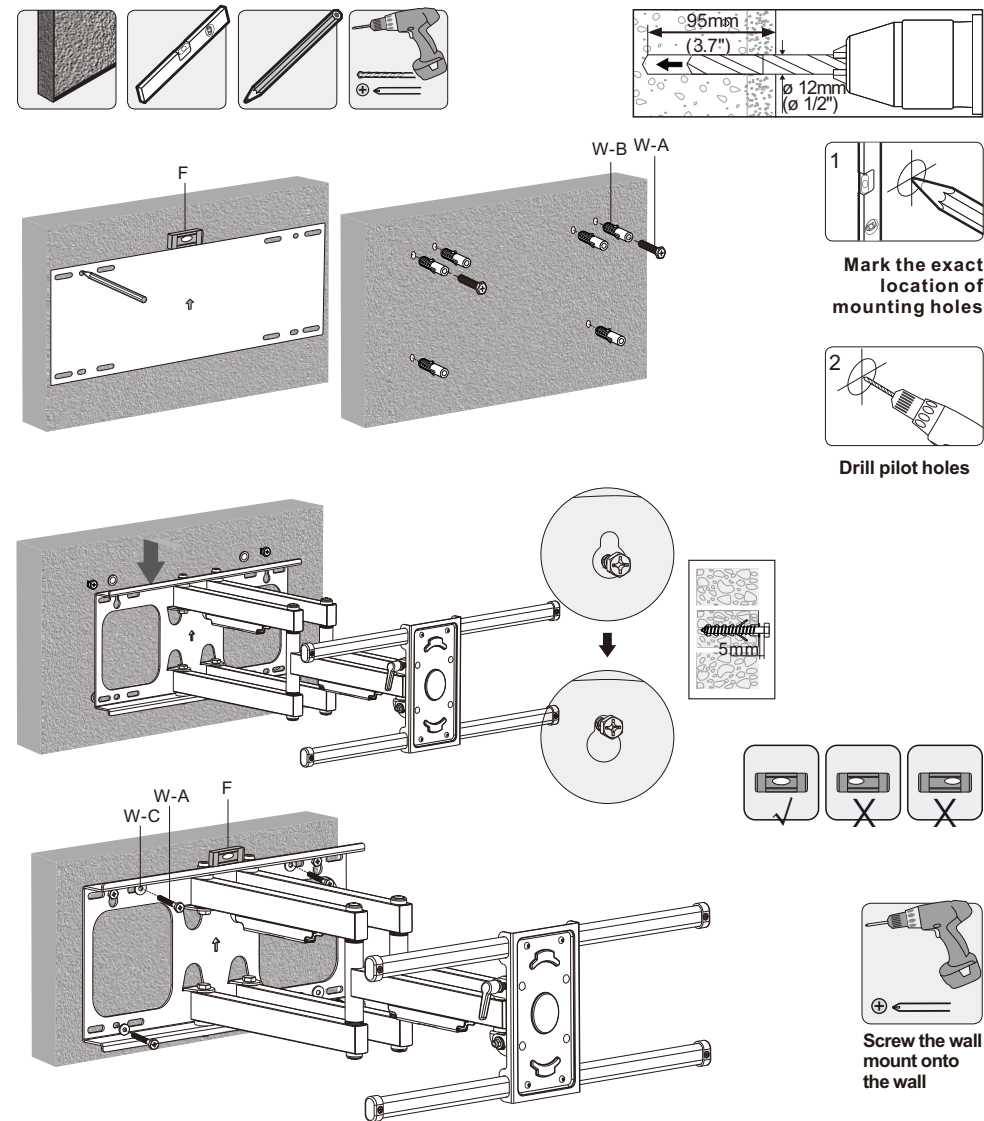
1a. For Wood Stud Wall Mounting



⚠ WARNING

- Make sure that mounting screws are anchored into the centre of the studs. The use of a stud finder is highly recommended.
- Installers are responsible to provide hardware for other types of mounting situations.
- Installers must verify that the supporting surface will safely support the combined weight of the equipment and all attached hardware and components.

1b. For Solid Brick and Concrete Mounting

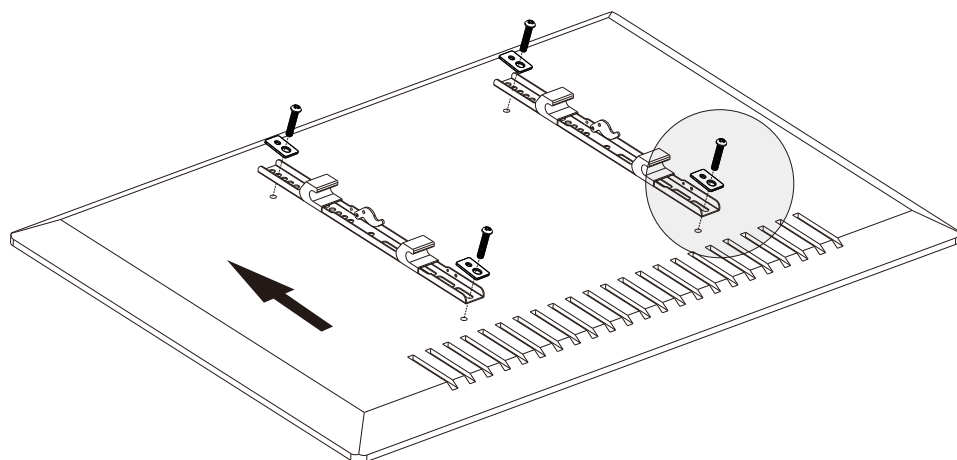
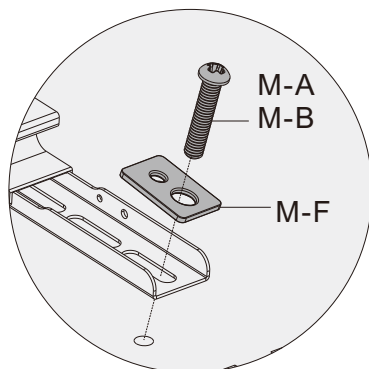


⚠ WARNING

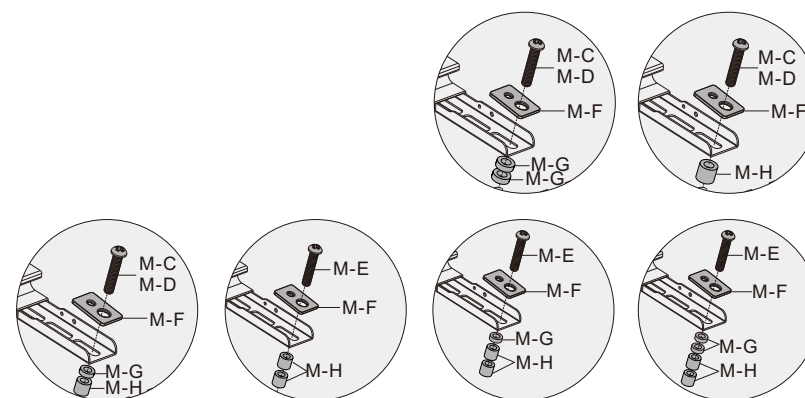
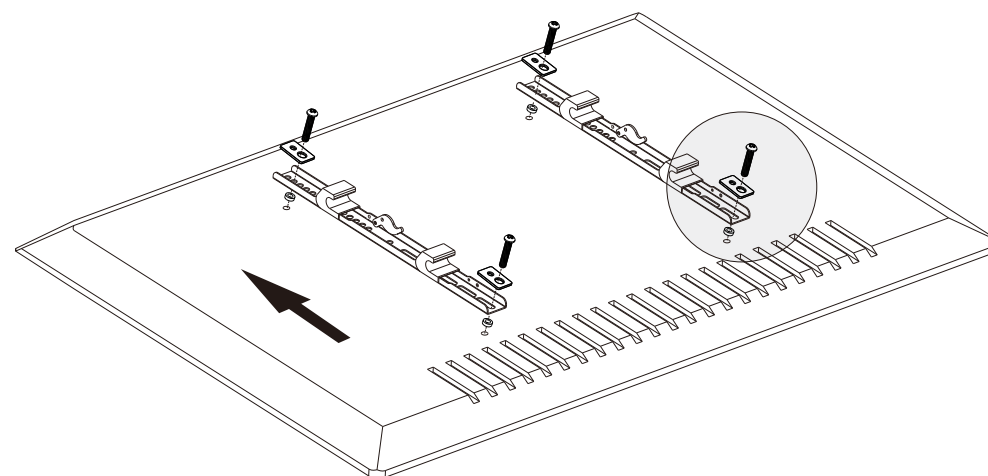
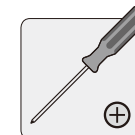
Installers must verify that the supporting surface will safely support the combined weight of the equipment and all attached hardware and components.

2.Installing the Adapter Brackets

2-1 For Flat Back Screens



2-2 For Recessed Back Screens or to Access A/V Inputs

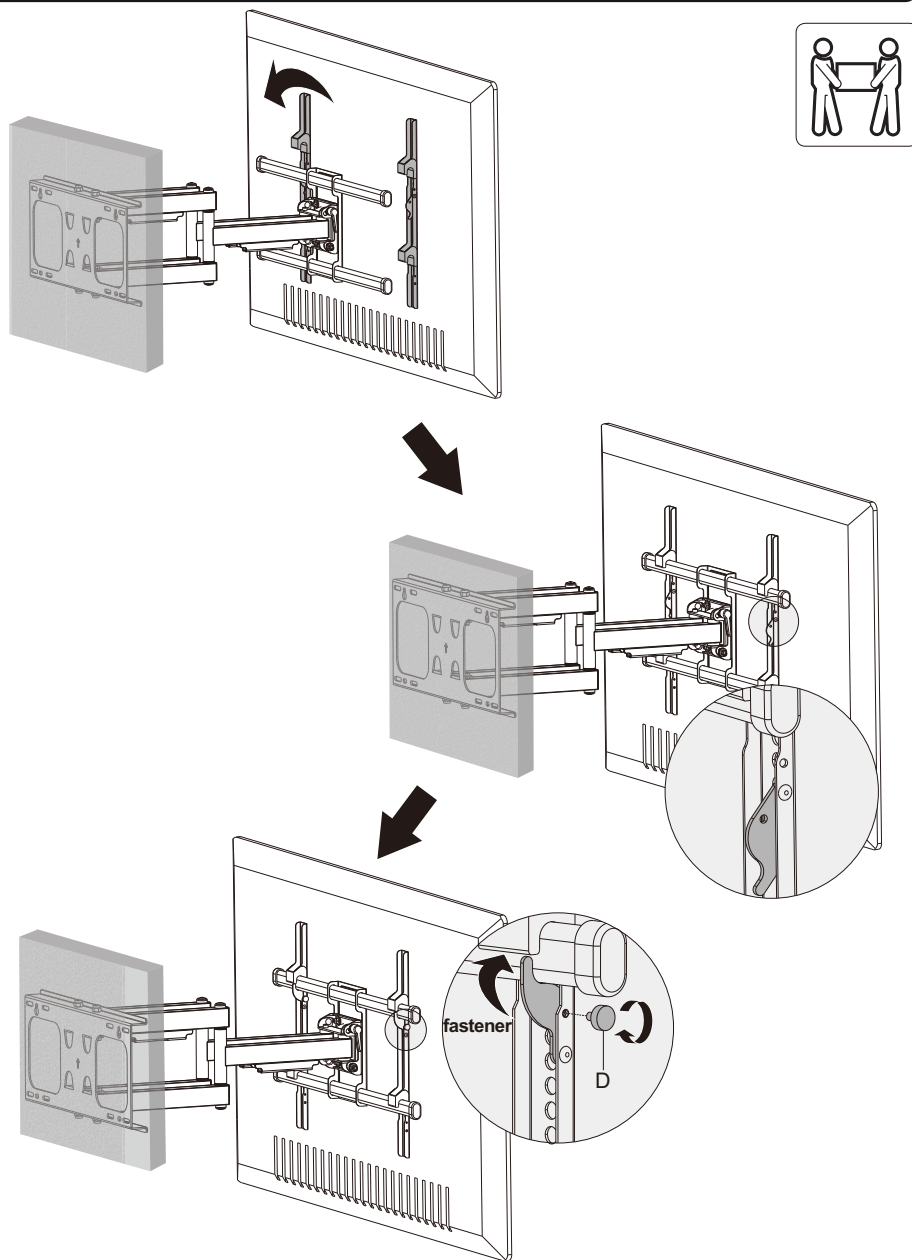


Note: Choose the appropriate screws, washers and spacers (if necessary) according to the type of screen.

- Position the adapter brackets as close as possible to the centre of the TV.
- Screw the adapter brackets onto the TV.

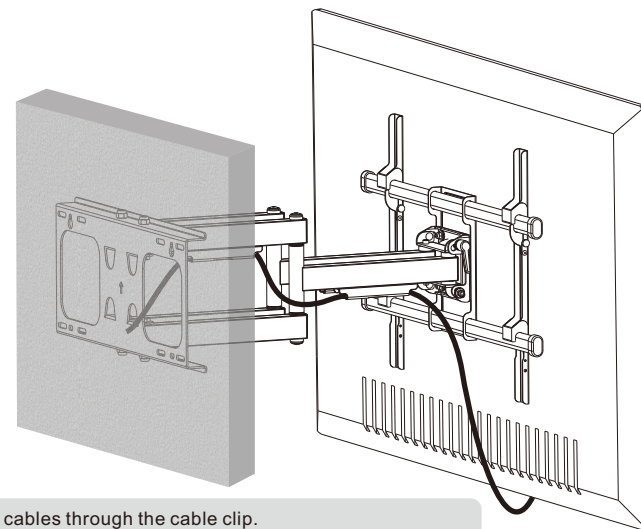
! Tighten all screws but do not over tighten.

3. Hooking the TV onto the Wall Mount



- Lift the TV with brackets attached and hook the brackets over the sliders.
- Close the fasteners and tighten the knobs to secure the TV to the mount.

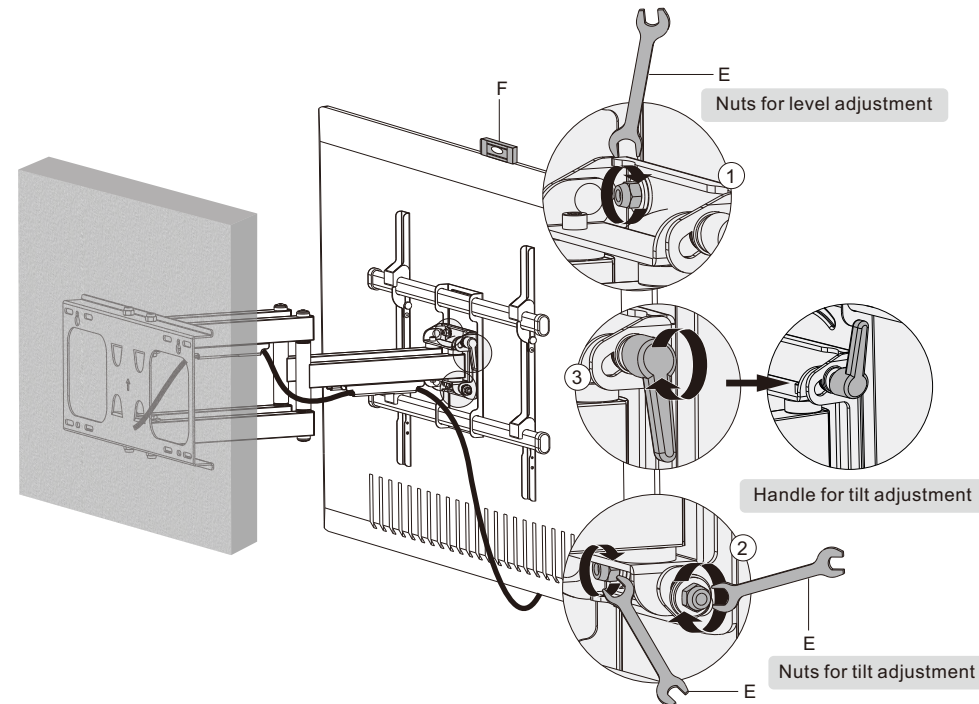
4. Cable Management



Run the cables through the cable clip.

Note: Leave slack in the cable for cantilever arm movement.

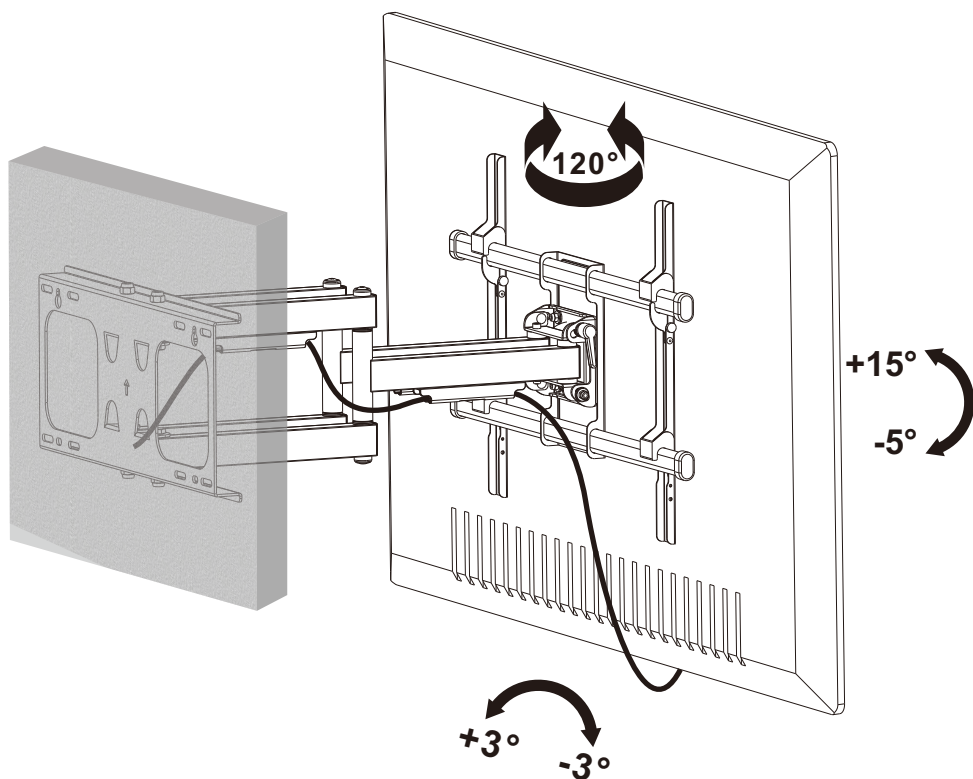
5. Adjustment



Nuts for level adjustment

Handle for tilt adjustment

Nuts for tilt adjustment



Adjust to the desired position or tilt.

Maintenance

- Check that the bracket is secure and safe to use at regular intervals (at least every three months).
- Please contact your dealer if you have any questions.